

GXA-10 Glass Breeze Break for Instruction Manual

Feature

- The glass breeze break (GXA-10) can install on the all of the GX-A balances.
- If the GXA-10 is used, it can protect the balance from the effects of a breeze and will provide more accurate weighing results. An anti-static treatment has been applied to the breeze break components. Therefore, the weighing error caused by static electricity can be reduced.

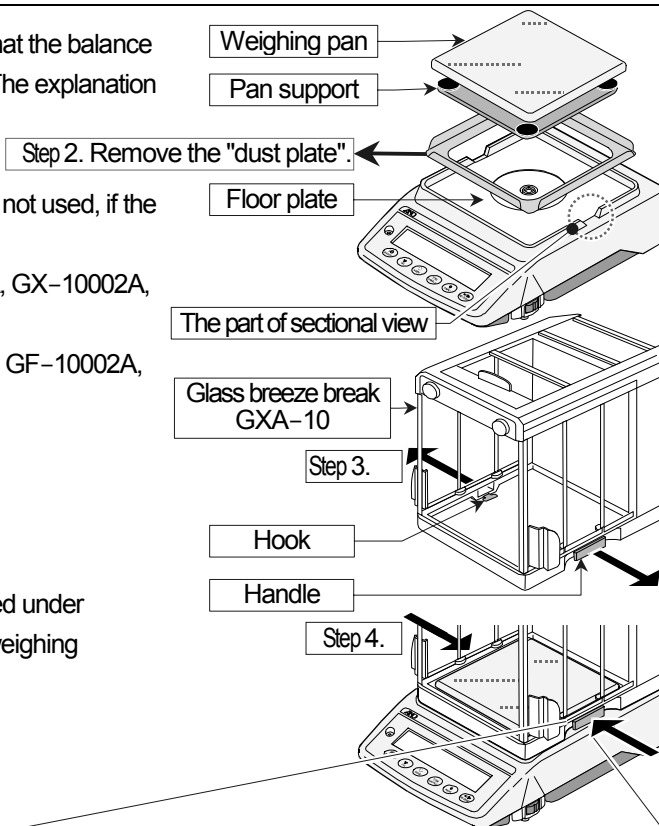
Installing the Glass Breeze Break

Step 1. Remove the weighing pan and pan support so that the balance has not damage. Remove the AC adaptor, too. The explanation uses the drawing of the GX-6002A.

Step 2. Remove the dust plate because the dust plate is not used, if the following balances are used.
 GX-2002A, GX-3002A, GX-4002A, GX-6002A, GX-10002A,
 GX-6001A, GX-10001A,
 GF-2002A, GF-3002A, GF-4002A, GF-6002A, GF-10002A,
 GF-6001A, GF-10001A

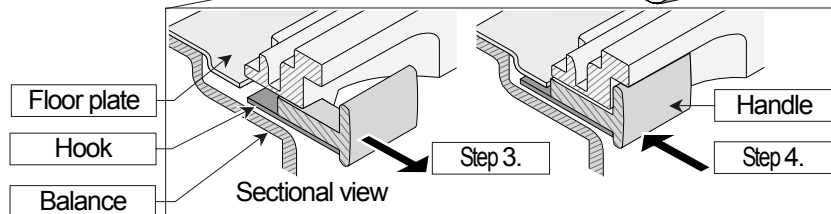
Step 3. Pull both handles on the glass breeze break.
 Place the glass breeze break on the balance.

Step 4. Confirm that both hooks of the handle are inserted under the floor plate. Push in both handles. Install the weighing pan and pan support on the balance.



Caution

- Do not hold the breeze break when transporting the balance. Hold the balance.
- Remove the glass breeze break in reverse procedures when you clean around the weighing pan of the balance.



Specifications

Mass 2.3 kg
 Dimensions 259 W × 274 D × 268 H

Materials (Materials of the glass breeze break)

Glass parts	Tempered glass (be treated an anti-static treatment inside single face)
Resin parts	Electro-conductive ABS, Polyacetal
Metal parts	SUS, iron series

